

# Get in touch

Station House, Station Road,  
Turvey, Bedfordshire, MK43 8BH

Call **+44 (0)1234 881900**  
Email **contact@lcservs.com**



LC Services Ltd

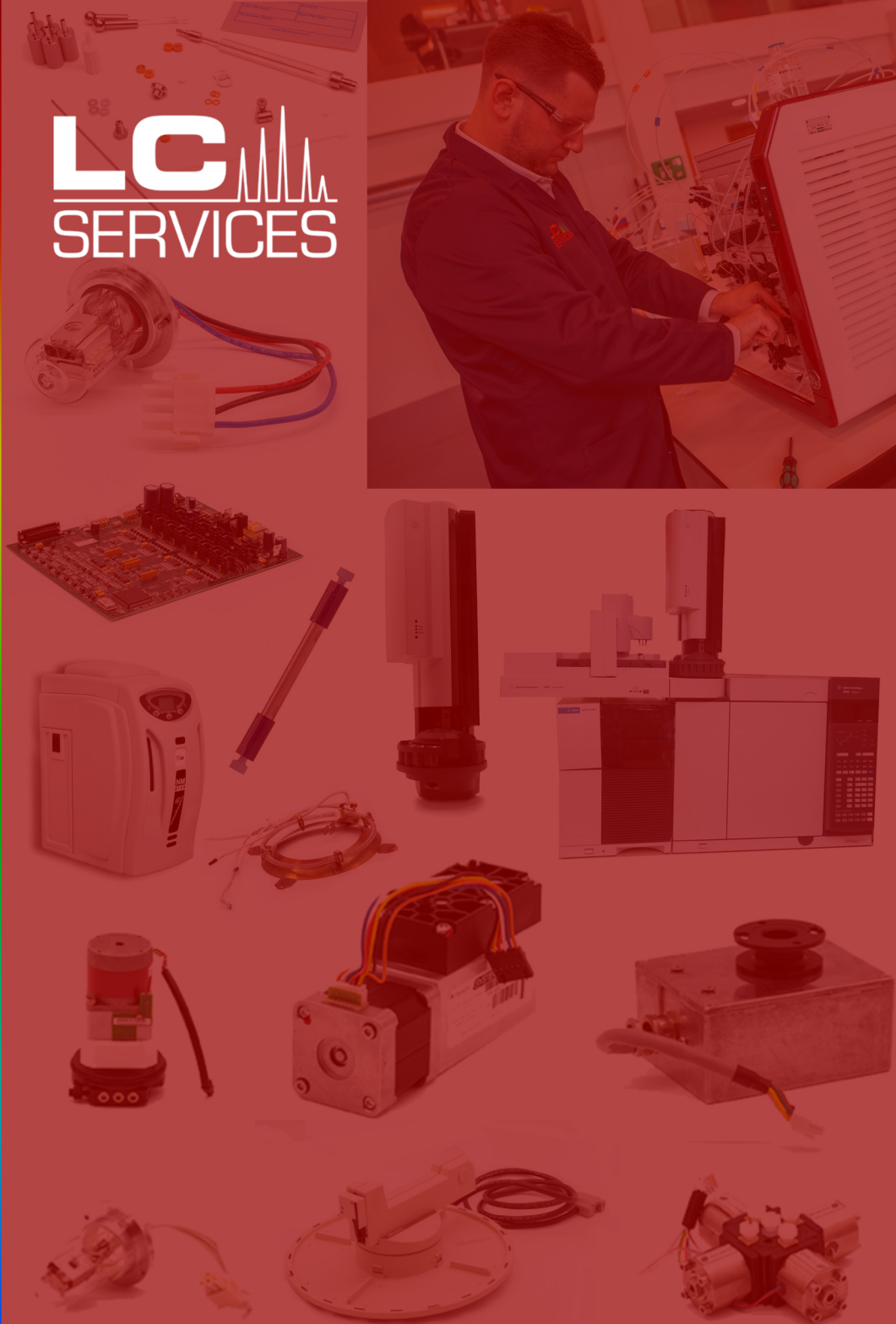


SCAN ME

[www.lcservicesltd.co.uk](http://www.lcservicesltd.co.uk)



# LC SERVICES



## About Us

**30 years of Service, Support, Repairs, Maintenance & Parts supply for all Analytical Laboratory Equipment.**

### **Page 1 - 3 - RECONDITIONED PRODUCTS**

Quality, fully refurbished parts and equipment, which can be exchanged with your faulty goods.

### **Page 4 - CHROMATOGRAPHY CONSUMABLE PARTS**

Consumables and service parts for all major chromatography instrument manufacturers.

### **Page 5 - HPLC DEUTERIUM LAMPS**

Our compatible deuterium lamp range supplied to customers and distributors worldwide.

### **Page 6 - 7 - HPLC, GC COLUMNS & GAS GENERATORS**

Bischoff & Chromservis columns and VICI DBS generators.

### **Page 8 - REFURBISHED VACUUM PUMPS**

### **Pages 9 - 12 - LABORATORY EQUIPMENT SERVICING**

Laboratory servicing within the UK and Europe

### **Page 13 - CHROMATOGRAPHY INSTRUMENT & HARDWARE TRAINING**

Global shipping available for all our products including laboratory equipment and systems.

## Refurbished Lab Equipment

**Fully refurbished analytical instrumentation.**

**All our systems are refurbished to industry standard by our team of highly trained engineers. With our expertise we work with you to make sure your equipment specifications are to the requirement of your laboratory needs.**

- **6 months warranty and global shipping included**
- **Software packages also available**
- **Installation included for UK customers**

**Refurbished systems for Agilent, Thermo, Waters and more.**



**Agilent 7890 GC / GCMS**



**Waters Acquity UPLC System**



# Refurbished Parts

We offer a vast range of high-quality electro-mechanical parts that are suitable for a variety of chromatography and spectrometry lab equipment.

Our online store includes a large selection of refurbished parts and equipment available for purchase and exchange. Our reconditioned parts for OEMs brands, such as: Agilent, Akta, CTC, Edwards, Perkin Elmer, Waters and more.

**Our extensive stock of refurbished chromatography parts can be shipped worldwide.**

Our catalogue includes:

- Autosampler Parts
- Degassers
- Flow Cells
- Gradient Valves
- Injectors
- Power Supplies
- Power Control Boards
- Refurbished instrumentation
- Vacuum Rough Pumps and more...



# Faulty Parts Exchange

All our refurbished parts are quality tested to OEM specification by our expert team of engineers. We stock parts for customers to exchange with their faulty parts.

With our exchange programme simply purchase the item you require and then send your faulty part back to us within 4 weeks. We will then either credit or refund to the exchange discounted price.

No faulty part? Just simply purchase our reconditioned parts with no exchange which can save you up to 70% on costs compared to OEMs.

## 3 EASY STEPS TO OUR EXCHANGE PROGRAM

ORDER THE  
PARTS YOU  
REQUIRE



YOUR PARTS  
ARE SHIPPED  
& DELIVERED



YOU HAVE 4 WEEKS  
TO RETURN FAULTY  
UNITS FROM  
SHIPMENT DATE



GE / Akta UV-900 Xenon Lamp



Agilent 7693A Autoinjector



Waters Acquity Actuator

# Consumable Parts



We have an extensive stock of high-quality consumables suitable for a variety of chromatography and laboratory equipment. Everything from: Capillaries, Filters, Needles, Preventative Maintenance (PM) kits, Seals, Syringes, Valves and more. Our compatible consumable parts fit seamlessly in OEM equipment for Agilent, Perkin Elmer, Shimadzu, Thermo / Dionex, Waters and more.

# Deuterium Lamps

Our quality compatible deuterium lamp range for HPLC Detectors and UV-Vis spectrometers can be shipped worldwide. LC Services offers a wide range of replacement Deuterium Lamps from world-renowned brands.

Compatible brands include: Agilent, Akta, Shimadzu, Thermo, Waters and many more.

GE Akta Prime Lamp



Shimadzu SPD 10A 20A



Knauer Azura Lamp



Waters Acquity PDA/TUV



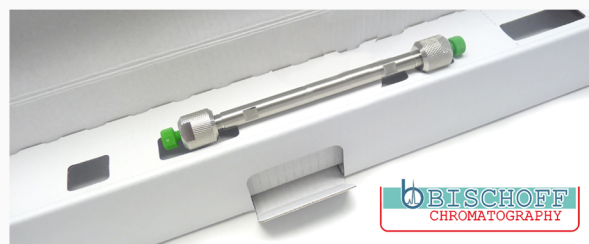
Agilent 1100 1200 DAD



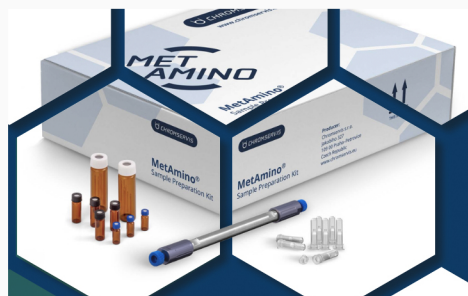


# HPLC & GC Columns

We are partnered with some of the leading manufacturers of HPLC and GC columns and accessories. Chromservis and Bischoff Columns cover an extensive range of stationary phases and provide the highest performance for your instruments.



**NEW PRODUCT**  
Metamino sample preparation kits offering a quick and easy sample preparation method for your LC-MS.



# VICI DBS Generators

We are distributors for high quality gas generators from VICI DBS. Their range of Hydrogen, Nitrogen and Zero Air Generators work alongside your analytical instruments.



From Mini and compact to multi-litre generators VICI DBS offer unique performance benefits, including guaranteed ultra-high purity gas, silent operation, minimal moving parts, and requires minimal operator attention.



**VICI have just released a new Multi - Litre hydrogen generator with up to three additional electrolyser cell stacks. Offering flow rates up to 18L PER MINUTE!**

# Refurbished Vacuum Pumps

---

As part of our refurbished and exchange items we also offer refurbished vacuum rough pumps for: Edwards, Pfeiffer, Leybold, Sogevac, Varian.

6 months warranty included and trade in your faulty pumps for credit.



# Welch Rotary Vane Pumps

---

Discover the evolution of two-stage rotary vane vacuum pumps. Built to last. Born to perform. And designed to simplify your work. Meet the robust vacuum pump series – CRVpro.



# Chromatography Servicing

---

**Tailored laboratory service and support plans for the UK and Europe by our team of qualified engineers.**

We offer multi cover on all your laboratory analytical equipment including: Liquid Chromatography (HPLC), Gas Chromatography (GC), Mass Spectrometry (MS) and more.

Our plans come with 48 hours breakdown response, online breakdown system support, telephone and email support, workshop repairs and deuterium lamp discount.\*

**Our Service Plans range from one off service visits to multi-machinery cover for your entire laboratory.**

\*Terms and Conditions apply





# Plan Types

See what contract plan is best suited for your laboratory.

Compare a Plan	Plan 1	Plan 2	Plan 3	Plan 4
Preventative maintenance		✓	✓	✓
48 hour On-site Response	◇	✓	✓	✓
Electromechanical Parts Included*				✓
Consumable Parts Included*			✓	✓
Breakdowns Included				✓
Phone Support	✓	✓	✓	✓
Off-Site Workshop Support		✓	✓	✓

\*Terms and conditions apply. ◇=Plan 1 offers 72 hours response.

# Supported Models

## Equipment We Cover

- Gas Chromatography (GC)
- Fourier-transform infrared spectroscopy (FTIR)
- Gas Generators
- Gas Chromatography–Mass Spectrometry (GCMS)
- Liquid Chromatography- Mass Spectrometry (LCMS)
- Liquid Chromatography (LC, HPLC, UPLC, FPLC)
- Mass Spectrometry (MS)
- Spectrophometers
- Certifuges/ Balances
- Incubators
- and many more...

## Brands We Cover

- Agilent / HP
- Dionex/ Thermo Fisher
- GE / Akta / Cytiva
- Gilson
- Knauer
- Merck Hitachi
- Perkin Elmer
- Shimadzu
- Varian
- VICI DBS
- Waters
- and many more...

# Operational Qualification

**LC Services OQ procedures have been designed in line with good laboratory practises, and good manufacturing practises which requires that all laboratory instrumentation shall be adequately inspected, cleaned and maintained.**

Our OQ procedures use a combination of test functions and analytical methods (using certified samples and equipment) to evaluate and verify the instrument or system is operating according to acceptable limits.

All Chromatographic data is captured on the customer's system and folders are generated to store the data. The OQ is performed on our very own tailor made software and generates certifications on site and is electronically signed by our engineers.

**All criteria can be tailored to the customers individual specification. Successful completion of the 'OQ protocol' will verify that your instrument is functioning at it's best. We can also offer re-qualification (RQ) following equipment breakdowns, enquire for more details.**

# Chromatography Instrument & Hardware Training

**Basic Maintenance and Troubleshooting Machine Training for Liquid Chromatography, Gas chromatography and Mass Spectrometry.**

**Our courses are designed to give new and advanced users an insight into basic operations of analytical instrumentation. These are 'hands-on' courses, designed to be attended by up to 5 users, and performed in the laboratory either at customers sites or in our workshops.**

## Course Overview

- **Run samples using all their system's capabilities.**
- **Dedicated time and support of our engineers.**
- **Identify the source of a problem.**
- **Practice of faults and small problems to better understand and gain knowledge of system.**

